

↑ | Side view, with emergency vehicle garages

↗ | Rear entrance

→ | Emergency vehicle garages

Volunteer Fire Station

Rüsselsheim

This compact, monochrome building is located within heterogeneous surroundings and stands out due to its distinctive yellow incisions. The dark exterior skin of the building is marked with light yellow incisions; these areas highlight the rear entrance, roof terrace and emergency vehicle garages, creating a contrast between the dark exteriors and light color of the interior. Despite having just a few window openings, natural light penetrates deep into the interior. The entire corridor leading from the glazed doors of the vehicle garages up to the upper floor is light and transparent. The front of the structure with its cantilevered porch roof indicates the building's function. The glazed portal makes the emergency vehicles clearly visible to passersby – the fire department on standby was the core idea in the development of this design.

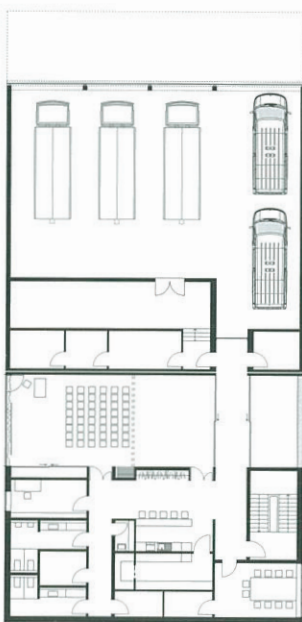
Address: Brunnenstraße 87, 65428 Rüsselsheim, Germany. **Client:** Magistrat der Stadt Rüsselsheim Fachbereich Gebäudewirtschaft. **Completion:** 2011. **Gross floor area:** 1,280 m². **Main materials:** masonry, reinforced concrete, timber roofing. **Number of emergency vehicle bays/garages:** 5. **Setting:** suburban.

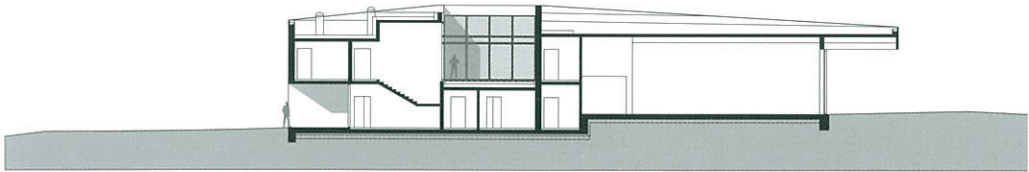
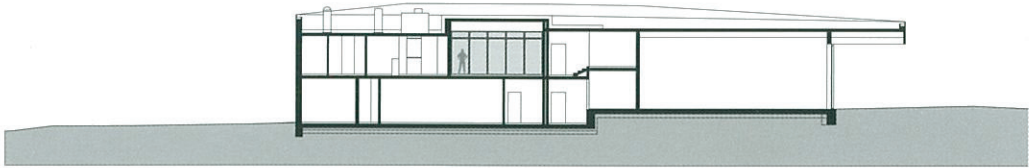
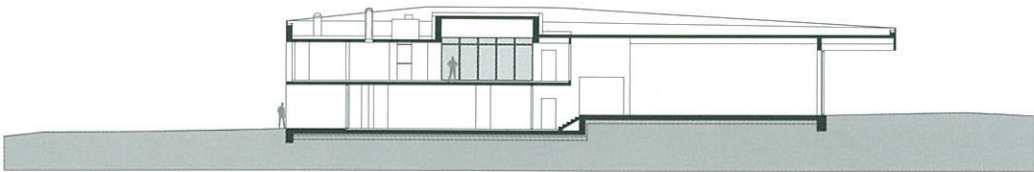




↑ | **Detail**, on rear entrance emergency number highlights building function

↙ | **Ground and first floor plans**





← | Sections
↓ | Section
↓↓ | Multifunctional room, flooded with natural light

